

# X-FACTOR CROSSMEMBER

QUALIFIER

XF12-001



## FOLLOW THESE STEPS

To note any compatibility limitations:



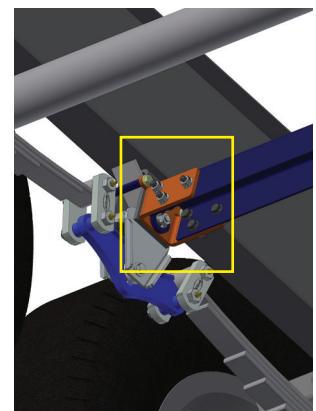
The **X-Factor Crossmember** provides lateral support of the frame hangers on a 5th wheel or travel trailer.

Crossmembers reduce stress on the frame of a trailer from rough roads, tight cornering or extreme side forces.

### STEP 1

#### FRAME HANGER HEIGHT

Frame hanger must have a minimum height of 3.25" from the top of the hanger to the center of the mounting hole; a frame hanger that is 2.25" from the top of the hanger to the center of the mounting hole will not work.



Above. Beyond. Always.

574.293.1581 • [www.MORryde.com](http://www.MORryde.com)



## STEP 2

### HANGER INCOMPATIBILITY

The X-Factor Crossmember will **not work** with Norco/BAL/NXG frame hangers (fig. A & B), angled (triangular) frame hangers (fig. C) or with aftermarket Correct Track hangers (fig. D). If OEM Correct Track frame hangers (fig. E) are present on your trailer, an additional adapter is required (XF12-002).



Fig. A



Fig. B

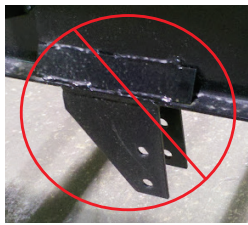


Fig. C



Fig. D



Fig. E

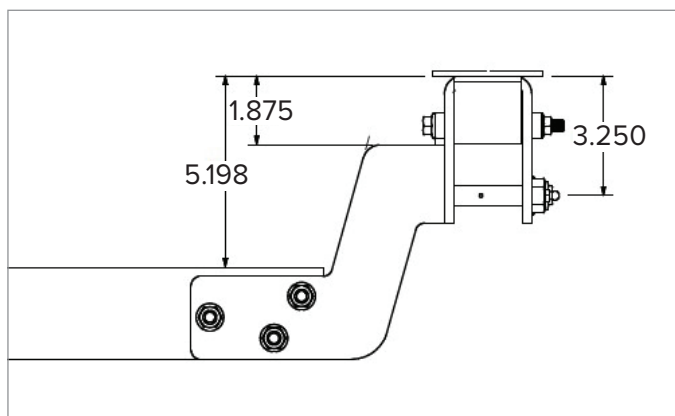
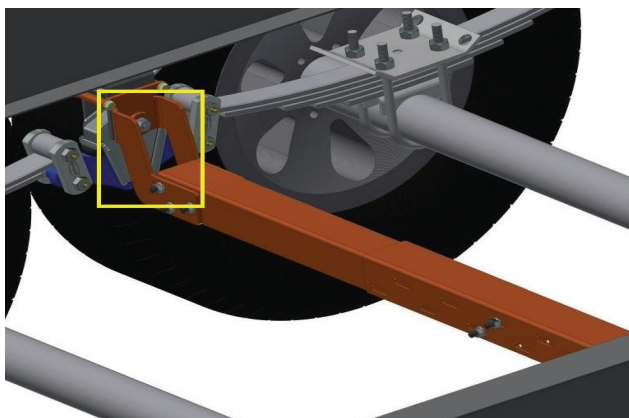
**PLEASE NOTE:** The triangular frame hangers shown above (Fig. B) may be modified to accept the MORryde X-Factor Crossmember, though doing so may void your trailer frame warranty.



## STEP 3

### HANGER CLEARANCE

If an obstruction exists between the hangers that would interfere with the X-Factor crossmember installation, adding an X-Factor crossmember drop down adapter kit (XF12-003) will give 5" total clearance for an additional 3" of clearance compared to the standard version (XF12-001).



Scan the QR code  
to learn more about  
the X-Factor  
Crossmember



Above. Beyond. Always.

