



# AIR2 INDEPENDENT SUSPENSION

FIRMWARE UPDATE INSTRUCTIONS - iOS



Above. Beyond. Always.

574.293.1581  
[www.MORryde.com](http://www.MORryde.com)



Above. Beyond. Always.

574.293.1581  
[www.MORryde.com](http://www.MORryde.com)

# AIR2 INDEPENDENT SUSPENSION

## FIRMWARE UPDATE INSTRUCTIONS - iOS

### CONTENTS

Introduction ..... 3

Update Instructions ..... 3

Troubleshooting..... 12

Customer Support.....15

# AIR2 INDEPENDENT SUSPENSION

FIRMWARE UPDATE INSTRUCTIONS - iOS

## INTRODUCTION

### Update Specific To:

Palomino Pause Trailers

### Product to be Updated:

AKTV8 Control Mobile

### Location of Item to be Updated:

On the Power Pack located in the front pass-through or rearward compartment on the driver-side.

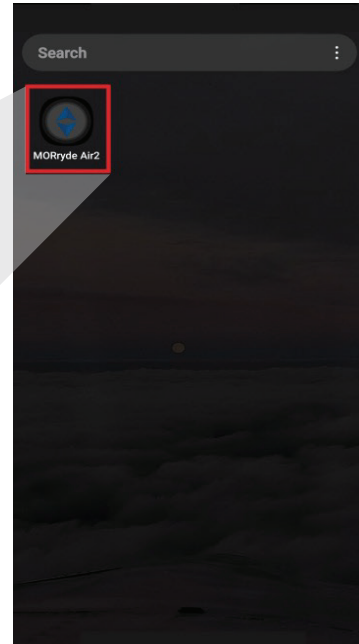
## IMPORTANT

During the firmware update, remain close to the RV with the door containing the Module cracked/open. Once the update has completed there will be an audible click that comes from the module indicating that the update has successfully occurred and completed.

## UPDATE INSTRUCTIONS

### STEP 1

Proceed to the iOS App Store and download the MORryde Air2 App onto your device.



Above. Beyond. Always.

574.293.1581  
www.MORryde.com

# AIR2 INDEPENDENT SUSPENSION

## FIRMWARE UPDATE INSTRUCTIONS - iOS

### UPDATE INSTRUCTIONS

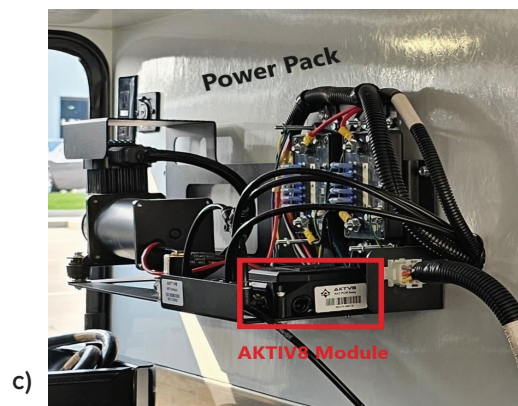
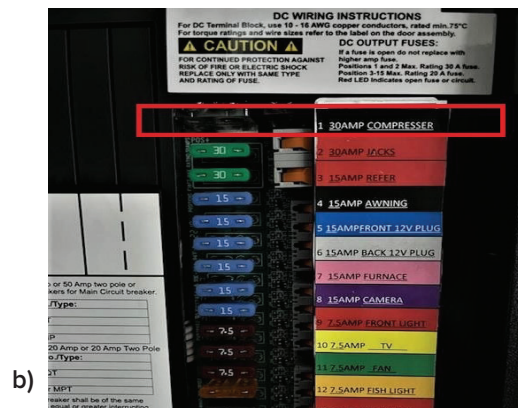
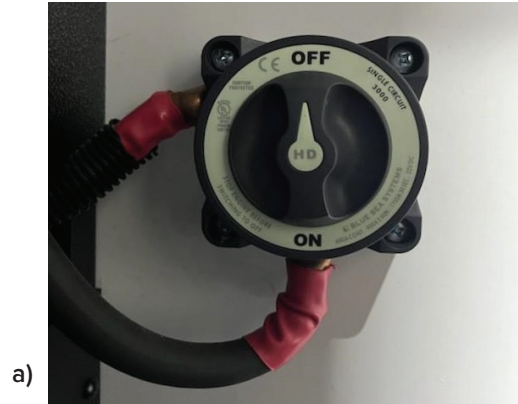
#### STEP 2

Power Cycle the Air2 AKTV8 Module one of three ways:

a) If inside a building that is shielded from sunlight, unplug the trailer from shore power then turn the battery disconnect to the Twelve (12) O'clock "OFF" position for three (3) seconds then turn back to the Six (6) O'clock "ON" position.

b) From the fuse box inside of the trailer, to the right of the breakers, locate and pull the "COMPRESSOR" fuse located at the top of the fuse box - wait three (3) seconds and re-insert the fuse.

c) Locate the Power Pack mounted in the Front pass-through OR rearward compartment on the drivers-side of the trailer.



# AIR2 INDEPENDENT SUSPENSION

FIRMWARE UPDATE INSTRUCTIONS - iOS

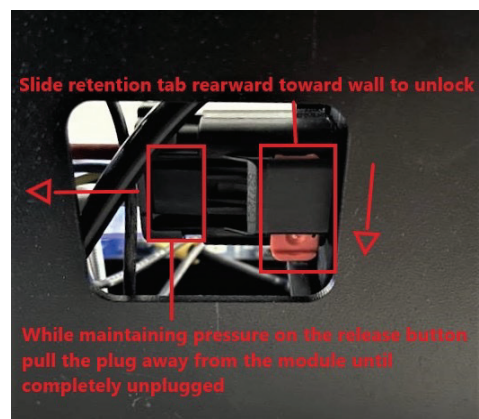
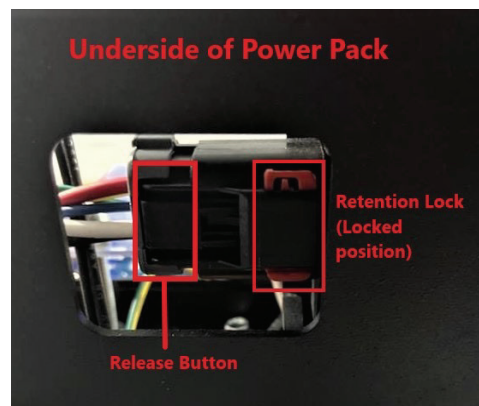
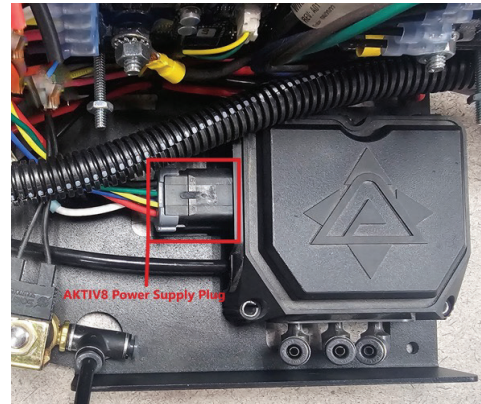
## UPDATE INSTRUCTIONS

*(STEP 1 continued)*

Once located, disconnect the power source to the module for three (3) seconds and then re-connect.

**Note:** The plug is located on the left side of the module. To access the module power source you will need access to the **underside** of the power pack bracket.

Once the underside of the bracket is accessed, slide the retention tab back toward the mounting wall, then depress the release button and keep it depressed while sliding the plug toward the compressor to disconnect. Leave disconnected for three (3) seconds then re-connect and slide retention tab into the locked position.



Above. Beyond. Always.

574.293.1581  
www.MORryde.com

# AIR2 INDEPENDENT SUSPENSION

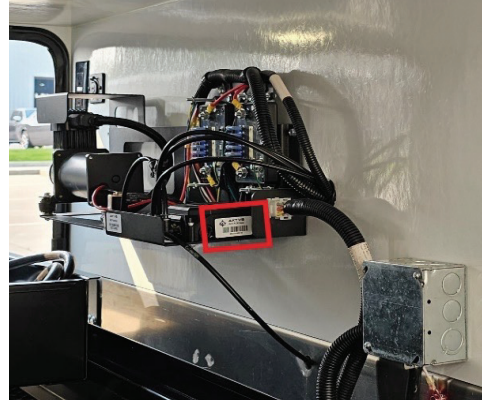
FIRMWARE UPDATE INSTRUCTIONS - iOS

## UPDATE INSTRUCTIONS

### STEP 3

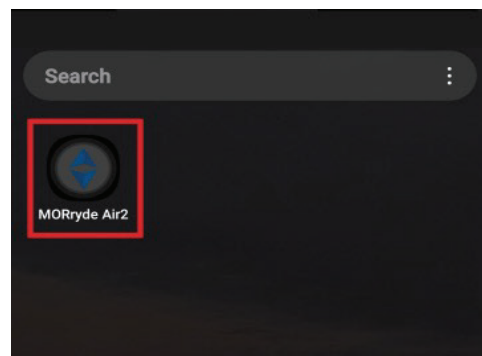
Locate the leveling/suspension power pack. Once located, observe and note the AKTV8 Control Module serial number as this number will be needed when connecting the App to the Control Module via Bluetooth.

**Note:** Only the last six (6) numbers of the identifier need to be considered/noted when connecting.



### STEP 4

Locate the leveling/suspension power pack. Once downloaded from the App Store, open the MORryde Air2 App.



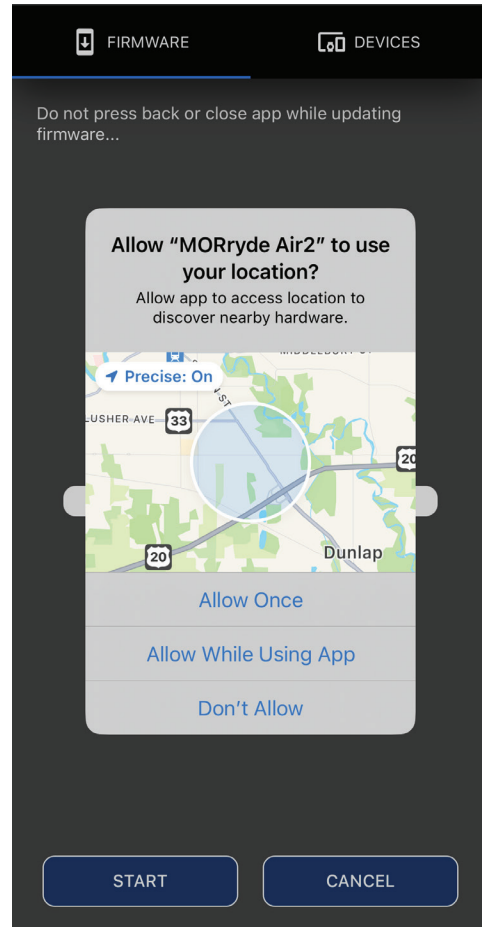
# AIR2 INDEPENDENT SUSPENSION

FIRMWARE UPDATE INSTRUCTIONS - iOS

## UPDATE INSTRUCTIONS

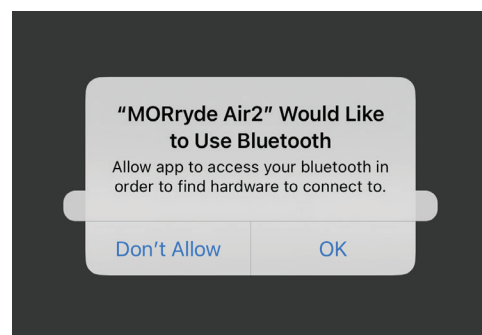
### STEP 5

Once opened, the user is asked to enable location sharing. In order to function, the MORryde Air2 App requires users to allow location permissions to be turned on. Select one of the 2 options for enabling location permissions.



### STEP 6

Once location permissions have been enabled, the user is advised that Bluetooth permissions need to be enabled in order to function. When prompted, select "OK" to acknowledge that Bluetooth needs to be enabled.



Above. Beyond. Always.

574.293.1581  
www.MORryde.com

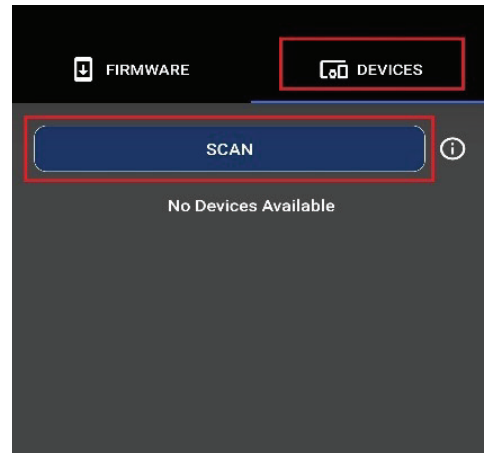
# AIR2 INDEPENDENT SUSPENSION

## FIRMWARE UPDATE INSTRUCTIONS - iOS

### UPDATE INSTRUCTIONS

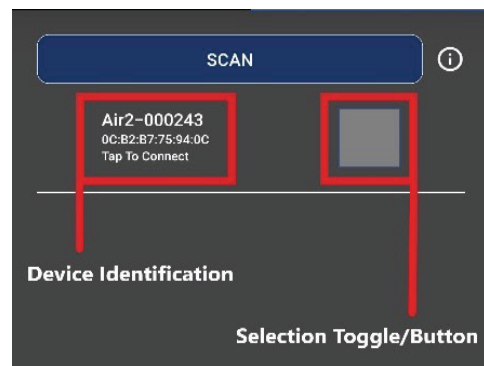
#### STEP 7

Once location and Bluetooth permissions have been enabled, the user observes a screen allowing them to toggle between “FIRMWARE” and “DEVICES”. Toggle the “DEVICES” option located at the top right of the App screen. Once “DEVICES” has been selected, press the “SCAN” button allowing the app to search for the MORyde Air2 AKTV8 Module via Bluetooth.



#### STEP 8

Once the “SCAN” button has been pressed, any nearby discoverable Bluetooth devices will appear as options to connect to. Of the available Bluetooth connections, the user will search for the option containing the Air2 and six (6) digit AKTV8 Module serial number mentioned earlier in the document.



# AIR2 INDEPENDENT SUSPENSION

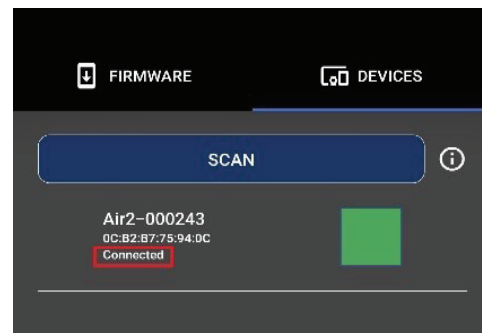
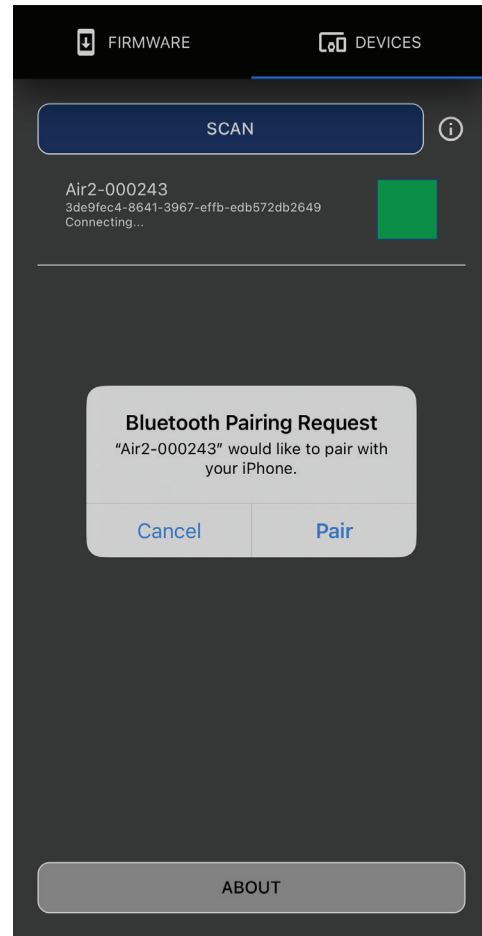
FIRMWARE UPDATE INSTRUCTIONS - iOS

## UPDATE INSTRUCTIONS

### STEP 9

Once identified, press the device selection toggle positioned to the right of the device ID. Once pressed, the selection button turns green and a Bluetooth pairing request appears at the bottom of the App screen. To pair the App with AKTV8 Module, the user will select the "Pair" button.

**Note:** While pairing, the word "Connecting" will appear below the device ID; once the devices are paired the word "Connected" appear below the device ID.



Above. Beyond. Always.

574.293.1581  
www.MORryde.com

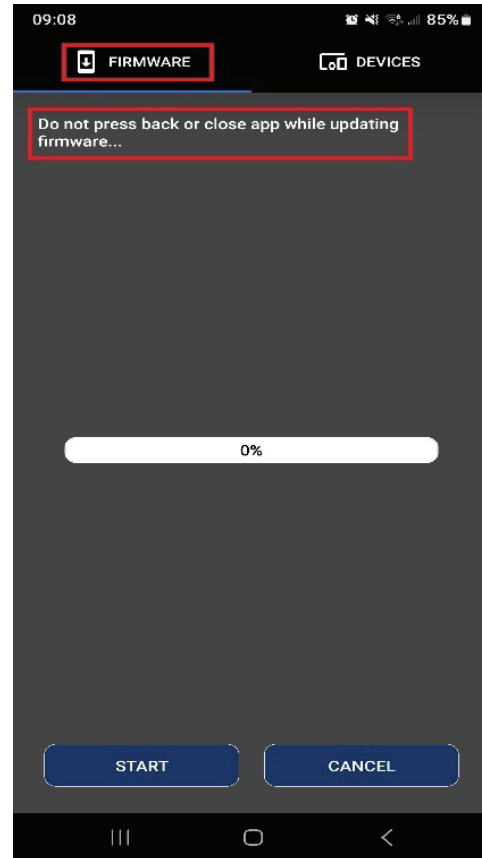
# AIR2 INDEPENDENT SUSPENSION

## FIRMWARE UPDATE INSTRUCTIONS - iOS

### UPDATE INSTRUCTIONS

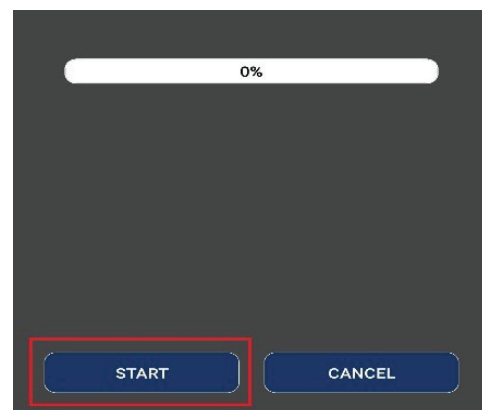
#### STEP 10

Once the app has successfully paired/connected to the AKTV8 Module, the user will select the "FIRMWARE" toggle located on the top left of the App screen. Once in the "FIRMWARE" screen it is important that the user not hit the back button or close the App during the updating process.



#### STEP 11

Press "START" to begin updating.



# AIR2 INDEPENDENT SUSPENSION

FIRMWARE UPDATE INSTRUCTIONS - iOS

## UPDATE INSTRUCTIONS

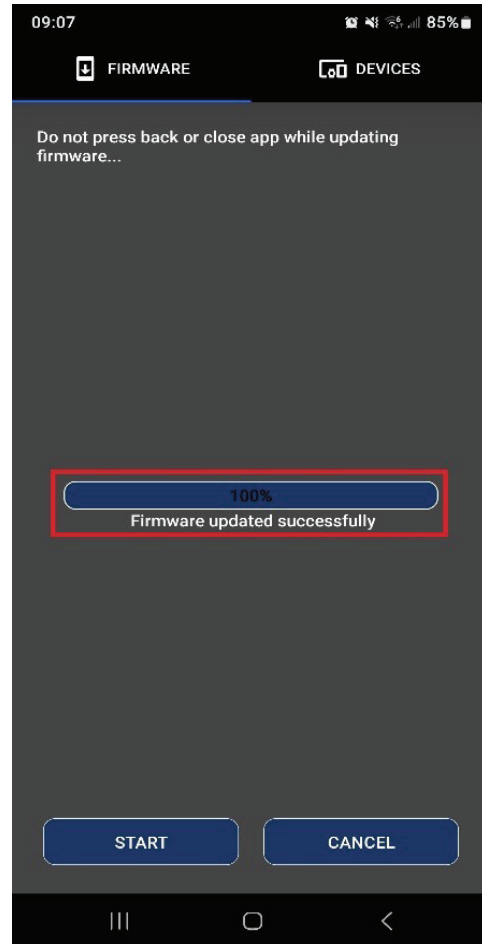
### STEP 12

Once complete, the App will display that the firmware has been successfully updated AND the user will hear an audible double click coming from the AKTV8 Module.

**Note:** It is important that the user remain in the update screen until the audible double click is heard coming from the module; keep in mind this may take 30sec to a minute longer than when the “Firmware updated successfully” message is displayed.

### STEP 13

Once successfully updated, return to the iOS device Bluetooth settings and un-pair the Module from the iOS device.



Above. Beyond. Always.

574.293.1581  
www.MORryde.com

# AIR2 INDEPENDENT SUSPENSION

## FIRMWARE UPDATE INSTRUCTIONS - iOS

### TROUBLESHOOTING

#### ERROR 1

While scanning, the module device ID does not appear as an option for the iOS device to connect to.

a) Ensure that Bluetooth on the iOS device is enabled. This can be done by selecting Settings – Connections – Bluetooth. Once there, confirm that Bluetooth is enabled.

b) Ensure that the Pause trailer has power. Check to ensure the battery disconnect dial is in the “ON” position. Check lights/appliances inside of the trailer to ensure they are working. Check the I/O lights on the Power Pack – If they are receiving power the user should see four (4) vertical rows of illuminated blue lights.

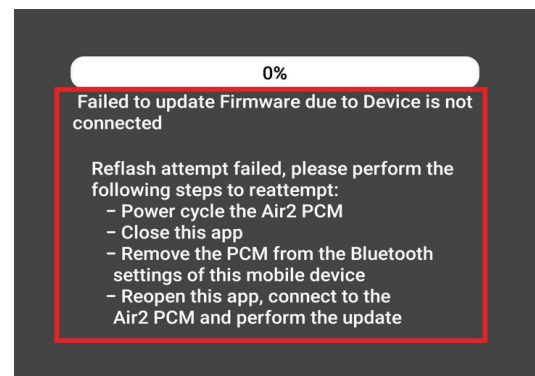
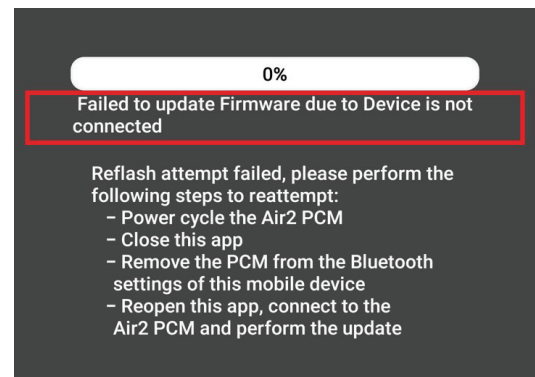
c) When the Module is power-cycled, upon power being restored two (2) audible clicks of the solenoid can/should be heard. Keep the pass-through door open during this process to aid in listening to confirm these clicks. If, upon cycling again, no clicks are able to be heard access the fuse panel and check the “Compressor” fuse (if equipped) to ensure it is in proper working order. If the fuse is working properly contact Pause Customer Service for further assistance.

d) Once power-cycled, the user has two (2) minutes to pair the iOS device to the module. Power-cycle the module again and pair within two (2) minutes. If, power-cycling does not resolve the issue, contact Pause Customer Service for assistance.

#### ERROR 2

While updating, a notification appears indicating that the update failed. Execute each/all the following steps in the order indicated:

- Power-cycle the AKTV8 Module.
- Close the MORryde Air2 App.
- Go to iOS Bluetooth connection settings and unpair/remove the AKTV8 Module from the device.
- Re-open the MORryde Air2 App.
- Again, Pair the Android device to the AKTV8 Module via Bluetooth.
- Perform the firmware update again.



If the second attempt at updating fails, contact Pause Customer Service for support.

# AIR2 INDEPENDENT SUSPENSION

FIRMWARE UPDATE INSTRUCTIONS - iOS



Above. Beyond. Always.

574.293.1581  
[www.MORryde.com](http://www.MORryde.com)

# AIR2 INDEPENDENT SUSPENSION

FIRMWARE UPDATE INSTRUCTIONS - iOS

# AIR2 INDEPENDENT SUSPENSION

FIRMWARE UPDATE INSTRUCTIONS - iOS

At MORryde, we have a passion for solving problems. Whether we're fabricating custom solutions, modifying a commercial chassis, or creating our innovative products, we answer to a wide range of markets and deliver on a variety of needs. At MORryde, it's simply about doing MORE for our customers, and it doesn't stop at the sale. We stand behind our products, believing in quality first, service always. No matter the issue, we'll be the first to respond and the last to be satisfied. In short, we build better — together.

## Customer Support

Austin Groves

Call **574-327-2681** or email [agroves@forestriver.com](mailto:agroves@forestriver.com)

Other questions? Contact the Parts Department at **574-293-1581** or email [parts@morryde.com](mailto:parts@morryde.com)



Above. Beyond. Always.

AIR2 SUSPENSION | Version 2

**574.293.1581**  
[www.MORryde.com](http://www.MORryde.com)