



EzSTOR HITCH[®]

INSTALLATION INSTRUCTIONS



SCAN ME for the
Installation Video



Above. Beyond. Always.

EzStor HITCH

INSTALLATION INSTRUCTIONS

INTRODUCTION

The EzStor Hitch is the solution to hitch equipment storage. Designed for travel trailers and cargo trailers, the EzStor Hitch helps keep your bulky/greasy hitch and bars off the ground or from taking up valuable storage space.

Tools Required:

- 1/2" Wrench
- 1/2" Socket
- Impact Gun

PREPARATION

General Safety & Warnings:

⚠ WARNING Read and understand all instructions and warnings prior to installation.

⚠ WARNING Failure to follow the instructions and heed the warnings of this document may result in injury, damage to the trailer and/or property, and/or voidance of the product warranty. Always utilize appropriate safety equipment, i.e. proper eye protection, hearing protection, gloves, etc.

⚠ WARNING You are personally responsible for following safe installation procedures and completing appropriate safety checks.



Above. Beyond. Always.

EzStor HITCH

INSTALLATION INSTRUCTIONS

INSTALLATION

STEP 1

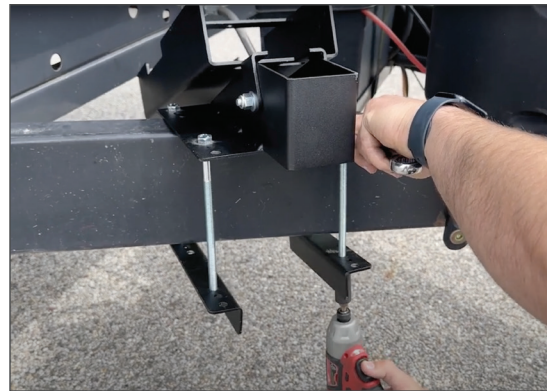
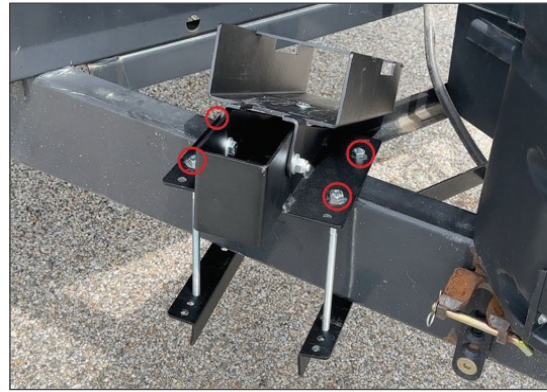
Determine where to mount the EzStor Hitch on the A-Frame. Ensure the base, bolts, bar tray, and hitch bars will not contact/rub any wiring, cables or gas lines. You may need to move the battery box further to one side to provide adequate room.



STEP 2

Using the ½" wrench and socket/impact gun, use the four hex bolts/nuts to mount the EzStor Hitch base to the A-Frame.

Note: do not tighten, leave loose enough to make final adjustments.

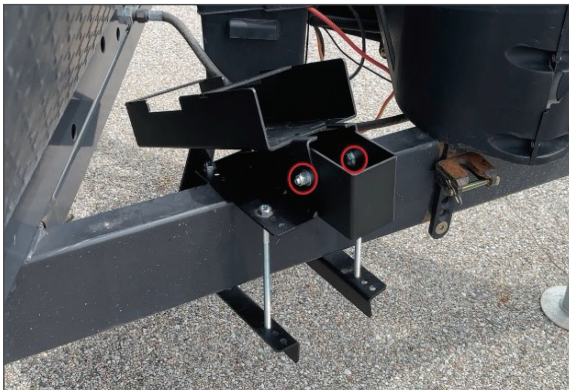


EzStor HITCH

INSTALLATION INSTRUCTIONS

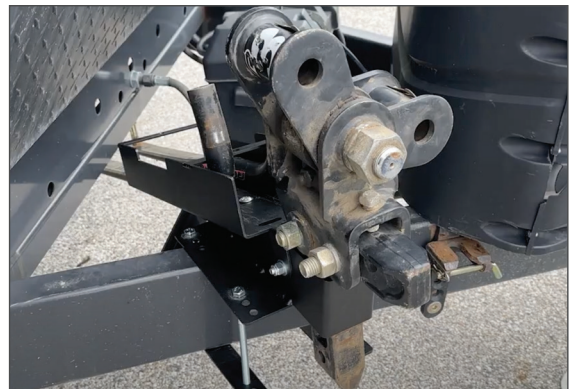
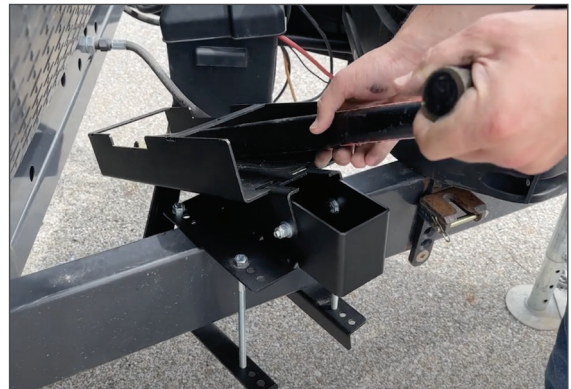
STEP 3

Perform a test fit and make any needed bar tray angle or frame mount adjustments. Once proper clearances/adjustments have been established, tighten all four nuts. Alternate tightening the nuts in such a way that allows for even level compression of the base around the A-Frame tube.



STEP 4

Perform final test fit to ensure that neither the hitch bars nor the head are contacting or rubbing against the trailer wiring, cabling, hoses or hitch brackets.



Questions? Contact the Parts Department at 574-293-1581 or email parts@morryde.com.

EzStor Hitch | VERSION 3

EzStor Hitch | VERSION 3



Above. Beyond. Always.

574.293.1581 • MORryde.com

