



JP54-018

JEEP JK DRIVER SIDE MOUNT & TRAY



INSTALLATION INSTRUCTIONS



Tools Needed

- T40 Torx socket
- 1/2" socket
- 13mm wrench
- 1/2" wrench
- 10mm socket



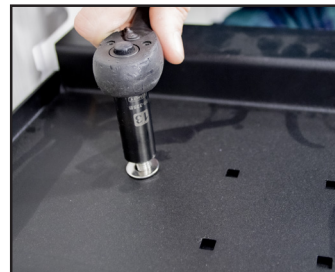
STEP 1

Using a 10mm socket, remove the (6) nuts that hold the running board to the pinch seam on the underside of the Jeep. Save the factory hardware for reinstallation later.



STEP 2

Using a 13mm socket, remove the (3) bolts that attach the running board to the floor boards of the Jeep. Save the factory hardware for reinstallation later.



STEP 6

Using (2) 1/2" wrenches, install the tray in the desired location on the side mount using the provided 5/16"-18 x 1" hardware.

STEP 3

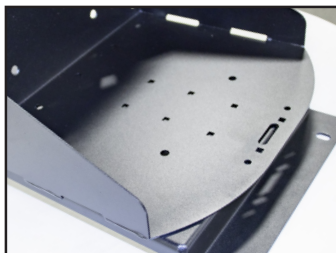
Carefully remove the running board from the Jeep.

STEP 4

To determine the best positioning of your Jerry can tray, please refer to the fit chart on the last page.

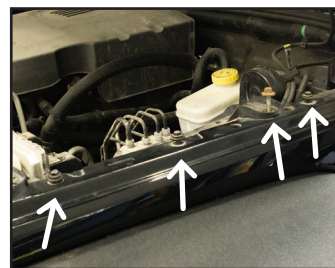
STEP 7

Open the Jeep hood and support it.



STEP 5

Line up the Jerry can tray on the side mount (before it is installed on the Jeep).



STEP 8

Temporarily remove several of the fender bolts with a 10mm wrench to allow the fender to be moved outward slightly, making it easier to slip the J-nut in place.

MORryde

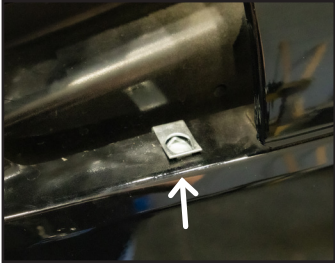
HEAVY. DUTY. ADVENTURE.

www.MORryde.com • 574.293.1581

JK DRIVER SIDE MOUNT & TRAY



INSTALLATION INSTRUCTIONS



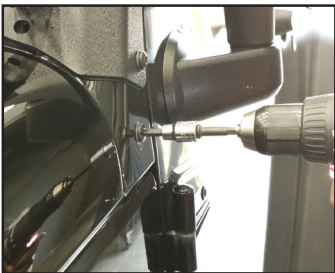
STEP 9

Attach the supplied J-nut into the existing square hole so that the raised part of the nut is facing downward into the hole as shown. Then replace the fender bolts.



STEP 12

Use the T40 Torx bit to install the windshield Torx screw through the hole in the side mount. Then use a 1/2" wrench to tighten the supplied 5/16-18 x 1" Hex Head bolt into the J-nut, but do not fully tighten.



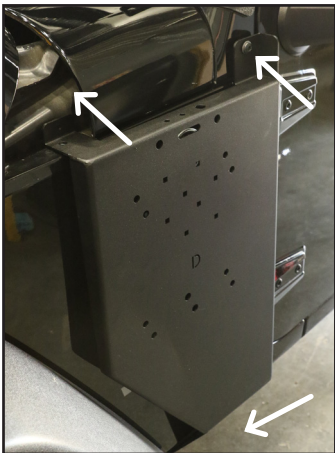
STEP 10

Use a T40 Torx bit to remove the bottom Torx screw from the windshield bracket and the upper bolt of the lower door hinge.



STEP 13

Looking at the pinch seam below the Jeep, line up the bottom-most slots in the side mount with the front-most holes in the pinch seam on the Jeep.



STEP 11

Position the mount over the three screw locations.

STEP 14

Install the necessary spacers between the body of the Jeep and the bottom of the side mount to keep the side mount evenly spaced away from the body of the Jeep and to fit between the body and the running board.



PLEASE NOTE:

2 spacers should be included with each kit. It is up to the discretion of the installer to determine if 0, 1, or 2 spacers are needed to maintain proper distance from the body of the jeep.

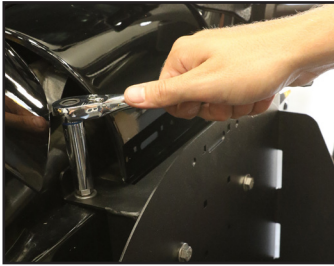
JK DRIVER SIDE MOUNT & TRAY



INSTALLATION INSTRUCTIONS

STEP 15

Re-install the rest of the running board and fasten it in place using the 10mm nuts and 13mm bolts that were previously removed from the Jeep. It is best not to completely tighten down any of the hardware until the install is completed.



STEP 16

Once all of the bolts are started in their corresponding holes, tighten down all hardware.

STEP 17

Lastly, reinstall bolts mounting the running board to the floor boards of the Jeep.

