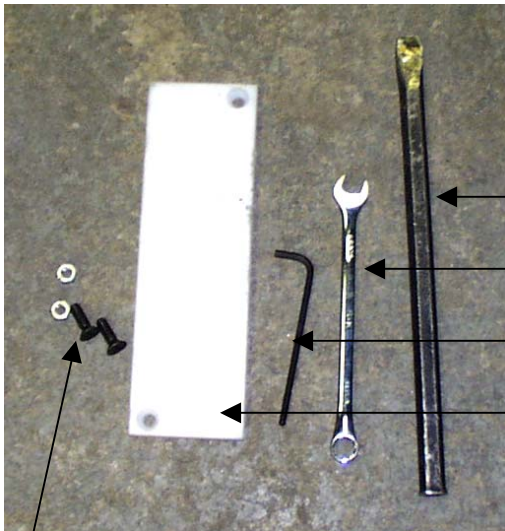


MOR/ryde  
“RL” Lateral Control  
Replacement Instructions



**MOR/ryde International**  
**1966 Moyer Avenue**  
**Elkhart, IN. 46516**  
**574-293-1581**

[www.morryde.com](http://www.morryde.com)



These are the components that are involved in the replacement of the lateral control.

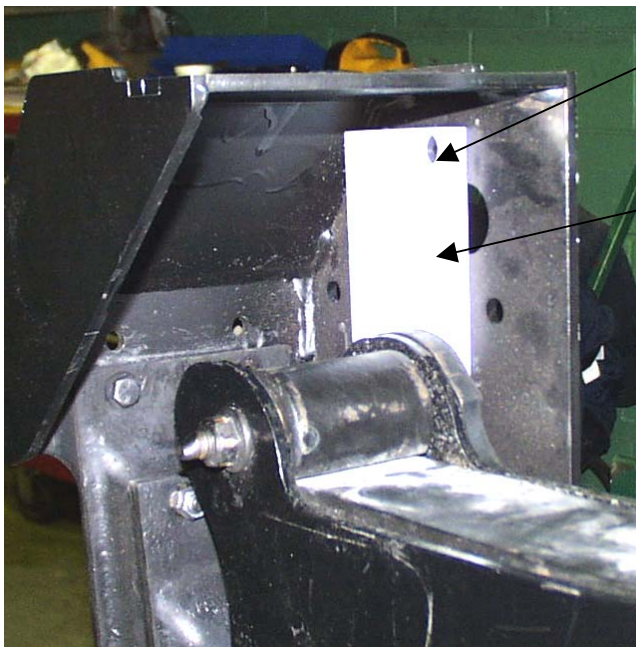
Pry bar.

1/2" wrench

3/16" Allen wrench

Glide Pad

5/16" socket head bolts and nuts.

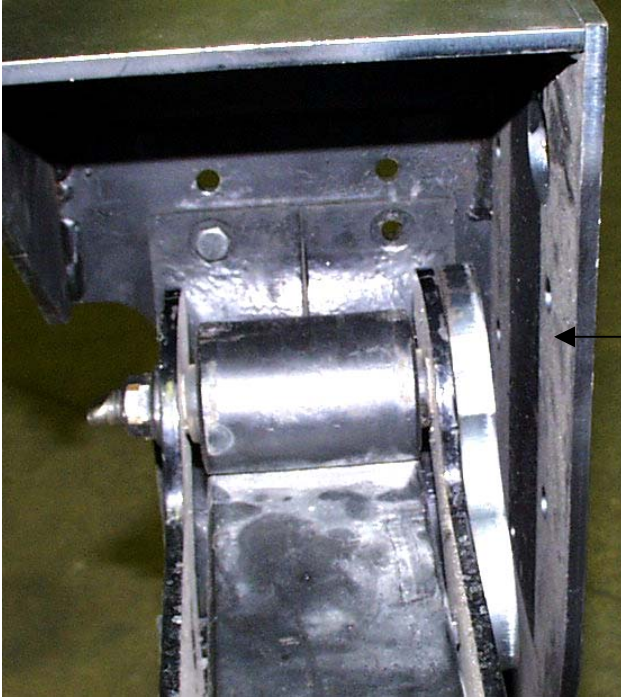


There is an Allen head bolt at the top to be removed. Hold the nut with a 1/2" end wrench.

This is the lateral control part (Glide Pad) to be removed.

The Allen wrench will need to be shortened to get into the bottom bolt. Grind about half of the length of the short end of the wrench off. It will help to pry the rubber shear spring over, away from the Glide Pad to get more room between the rubber and the Glide Pad. This can also be done with a Porta-Power inserted between the frame hanger and the leaf spring.

Once the Glide pad has been removed, reverse the procedure to reinstall the new parts.



This picture shows the Glide pad removed.

← This is the area that the new Glide Pad will be reinstalled.