



GOOSETECH

RUBBER GOOSENECK BOX

OWNER'S MANUAL & INSTALLATION INSTRUCTIONS



Above. Beyond. Always.

GOOSETECH

OWNER'S MANUAL & INSTALLATION INSTRUCTIONS

Congratulations on the purchase of your MORryde **GooseTech** rubber gooseneck box. This revolutionary new system redefines the experience of towing a 5th wheel. No longer will you have to live with the harsh, jerky, back-and-forth motion associated with towing. You can also forget about excessive wear and tear on your truck and RV and the added strain that this puts on drivers and passengers.

Your new GooseTech provides:

- Greatly reduced back-and-forth chucking and jerking
- Cushioned sensation over uneven road conditions
- Jerk-free starts and stops
- Smoother, more comfortable in-cab ride

Each MORryde **GooseTech** has been carefully engineered to match the existing pin box that it replaces. The **GooseTech** maintains the king pin location established by the original trailer manufacturer. By maintaining the static king pin location, stress and strain subjected to the trailer frame structure is minimized.

This manual will outline basic troubleshooting and preventative maintenance procedures associated with this system.



Above. Beyond. Always.

GOOSETECH

OWNER'S MANUAL & INSTALLATION INSTRUCTIONS

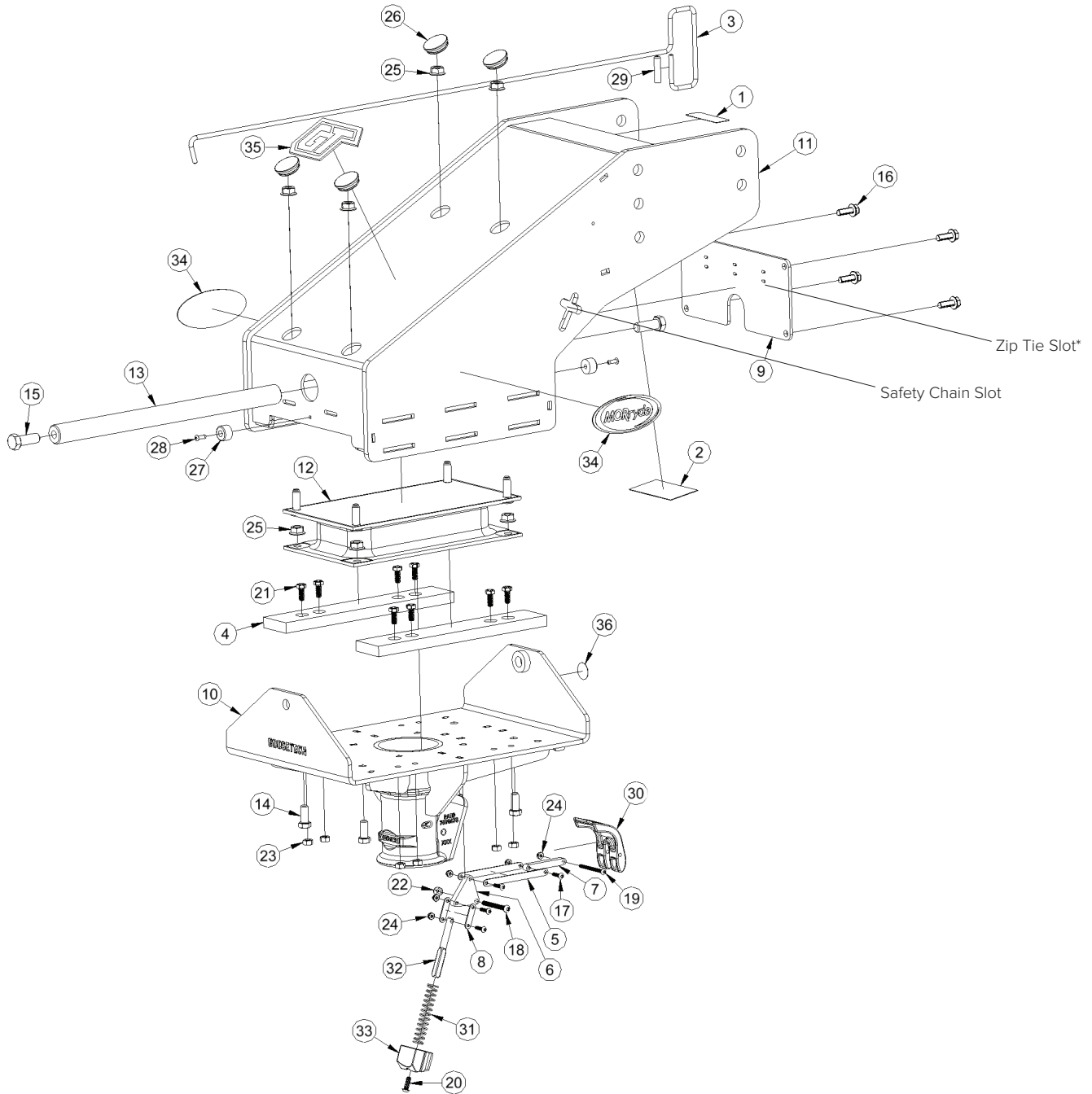
GENERAL PARTS LIST

ITEM	QTY	PART NUMBER	DESCRIPTION
1	1	LB-PEWT	DATE LABEL
2	1	RGN162-FD	RATING LABEL
3	1	RGN204-007	REMOTE RELEASE HOOK
4	2	RGN204-011	PLASTIC GLIDE BLOCK - FD & 1621SHD
	2	RGN204-012	PLASTIC GLIDE BLOCK - 1116 & 1716
5	2	RGN205-040	LATCH LINK - LONG
6	1	RGN205-041	LATCH CAM
7	1	RGN205-042	HANDLE LINK
8	2	RGN205-043	LATCH LINK - SHORT
9	1	RGN205-048	COVER PLATE
10	1	RGN57-011	LOWER WELDMENT
11	1	RGN70-	UPPER MOUNTING ASSEMBLY
12	1	RPB707-	RUBBER SPRING
13	1	RPB712-008	RETAINMENT ROD
14	4	UO115-155	HEX HEAD 7/16-14 X 1 GR8 ZINC
15	2	UO115-173	HEX HEAD 9/16-12 X 1-1/2 GR5 ZINC
16	4	UO115-461	HEX WASHER HEAD 3/8-16 X 1 THREAD ROLL ZINC
17	4	UO115-768	BUTTON HEAD 10-24 X 3/4 SS
18	1	UO115-1153	BUTTON HEAD 1/4-20 X 2-1/4 SS
19	1	UO115-1154	BUTTON HEAD 10-24 X 2-1/4 SS
20	1	UO115-1157	BUTTON HEAD 1/4-20 X 3/4 ZINC PATCHED
21	8	UO115-1165	HEX HEAD 5/16-18 X 3/4 GR8 ZINC
22	1	UO116-037	NYLOCK NUT 1/4-20 SS
23	8	UO116-068	CENTER LOCK NUT 5/16-18 ZINC
24	5	UO116-105	NYLOCK NUT THIN 10-24 SS
25	8	UO116-481	TOP LOCK NUT 7/16-14 ZINC
26	4	UO136-181	ACCESS PLUG
27	2	UO136-628	RUBBER BUMPER
28	2	UO136-1844	RIVET 3/16 X .376-.500 GRIP ZINC
29	1	UO136-3622	VINYL CAP BLACK
30	1	UO136-4172	LATCH HANDLE
31	1	UO136-4173	LATCH SPRING
32	1	UO136-4174	LATCH SHAFT
33	1	UO136-4175	LATCH BALL LOCK
34	2	UO162-001	MORRYDE DECAL
35	1	UO162-144	GOOSETECH GT DECAL
36	1	UO162-	NUMBER DECAL



GOOSETECH

OWNER'S MANUAL & INSTALLATION INSTRUCTIONS



*Zip tie to secure safety chain



Above. Beyond. Always.

GOOSETECH

OWNER'S MANUAL & INSTALLATION INSTRUCTIONS

PARTS INCLUDED

Item	Qty	Part Number	Description
1	1	RGN72-FD	FD GooseTech Box with Remote Release Hook
		RGN72-1116	1116 GooseTech Box with Remote Release Hook
		RGN72-1621SHD	1621SHD GooseTech Box with Remote Release Hook
		RGN72-1716	1716 GooseTech Box with Remote Release Hook
2	1	RPB46-001	Hardware Mounting Kit - 30 PC*
		RPB46-002	Hardware Mounting Kit - 36 PC*

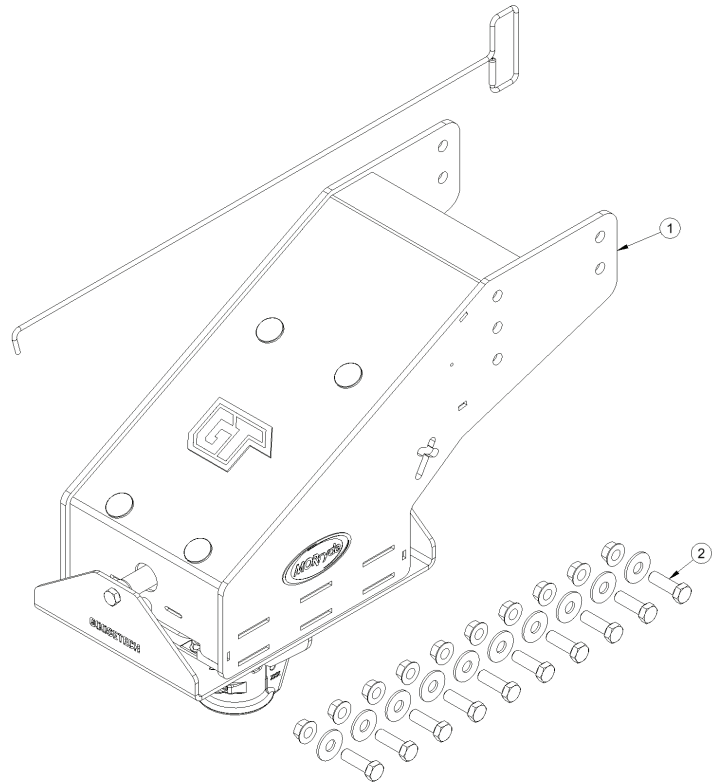
*Hardware is not provided for OEM installs.

Tools Required:

- Impact Gun or Ratchet
- Match size of Socket and Wrench to Gooseneck hardware: 15/16"
- Torque Wrench capable of 135 ft-lbs
- 3/8" Nut Driver or Socket
- Centering Pin (or screwdriver)
- Drill and 3/16" Drill Bit
- Phillips Screwdriver
- Safety Glasses
- Gloves



Scan here to watch
the step-by-step
GooseTech installation



GOOSETECH

OWNER'S MANUAL & INSTALLATION INSTRUCTIONS

PREPARATION

General Safety & Warnings:

- ⚠ WARNING** Read and understand all instructions and warnings prior to installation. Failure to follow these instructions and heed the warnings of this document may result in death or serious injury, damage to the vehicle and/or trailer, and/or avoidance of the product warranty. Always utilize appropriate safety equipment, i.e. proper eye protection, hearing protection, gloves, etc.
- ⚠ WARNING** Avoid positioning any part of your body under the upper deck of the trailer, or between the tow vehicle and gooseneck. Unintended movement of the tow vehicle or trailer may result in serious injury or death.
- ⚠ WARNING** Due to the weight of and size of the gooseneck, do **NOT** attempt this installation alone. At least (2) people are required for the installation of this system.



Above. Beyond. Always.

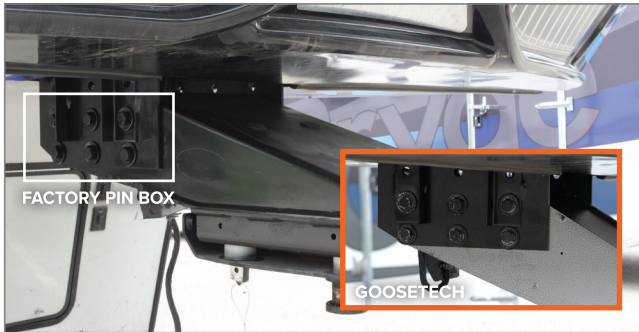
GOOSETECH

OWNER'S MANUAL & INSTALLATION INSTRUCTIONS

INSTALLATION

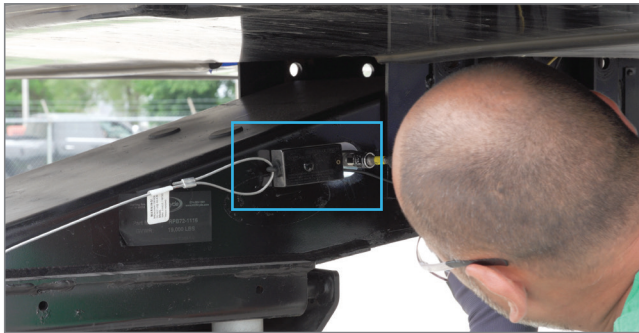
STEP 1

Note the locations of the bolts for the factory pin box. The MORryde system should be installed using the same factory hole settings.



STEP 2

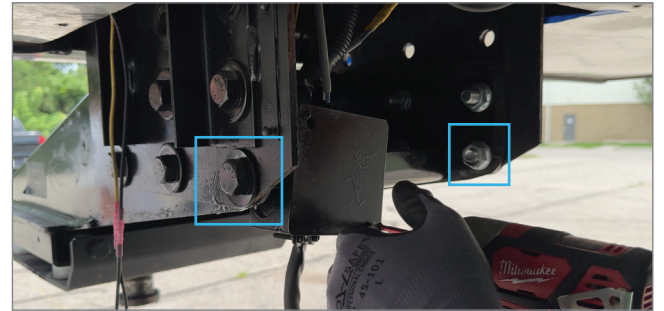
Remove any items attached to the factory pin box (i.e. power cord box, breakaway switch, exterior lights, lube plate, etc.)



STEP 3

Remove all but (2) of the bolts securing the pin box to the 5th wheel frame. Leave (1) bolt in place on the left side and (1) bolt on the right side, towards the back of the pin box. **DO NOT** remove the last (2) bolts until Step 4 is complete.

NOTE: Before removing the third to last bolt, ensure that a second person is securely supporting the front of the pin box. This will prevent the front of the pin box from dropping or swinging unexpectedly, which could result in injury to the person removing the pin box.



STEP 4

Ensuring that all parts of your body are clear of the pin box, and the factory box is properly supported, remove the remaining (2) bolts and lower the pin box.



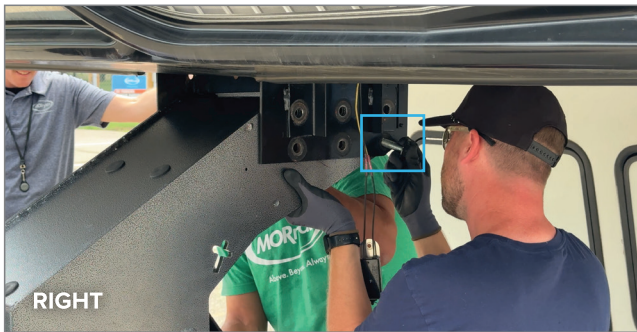
GOOSETECH

OWNER'S MANUAL & INSTALLATION INSTRUCTIONS

INSTALLATION

STEP 5

Carefully lift the GooseTech into place, then using a centering pin, center the holes and install (1) bolt on the left side and (1) on the right in opposing locations. Be sure to use the same mounting holes referenced in **Step 1**.



STEP 6

Install the remaining bolts and tighten down, then use a 15/16" socket and torque wrench to tighten the bolts to 135 ft-lbs.

NOTE: Re-check the torque values after the trailer has been towed 100 miles.



Above. Beyond. Always.

GOOSETECH

OWNER'S MANUAL & INSTALLATION INSTRUCTIONS

INSTALLATION

STEP 7

Lastly, re-install items that were removed in **Step 2**.



COMPLETE



GOOSETECH

OWNER'S MANUAL & INSTALLATION INSTRUCTIONS

HOOK-UP / CONNECT TO TOW BALL

Once the tow vehicle is properly positioned with the tow ball directly below the GooseTech box coupler:

- a. Ensure the latch handle is flipped up into the closed position.
- b. Use the trailer controls to lower the trailer GooseTech coupler onto the ball. As the coupler lowers down on to the ball, the latch handle will move outward and then back in to latch/lock onto the ball.
- c. Establish the electrical connection between the trailer and the tow vehicle.
- d. Connect the GooseTech safety chains to the truck.
- e. To ensure the coupler has properly locked into place, use the trailer controls to lift the trailer enough to slightly lift the bed of the truck.

NOTE: If, while performing the lift test, the bed of the truck **does not** lift and the coupler comes off the ball, raise the trailer so that it comes off the ball then open and close the latch handle – with the latch handle closed, use the trailer controls to again lower the trailer onto the ball then repeat the lift test.

- f. Once confirmed that the Goosetech is properly locked into place, use trailer controls to fully retract stabilizers. Once all other pre-check items have been completed trailer is ready to tow. Close the tailgate, if applicable.

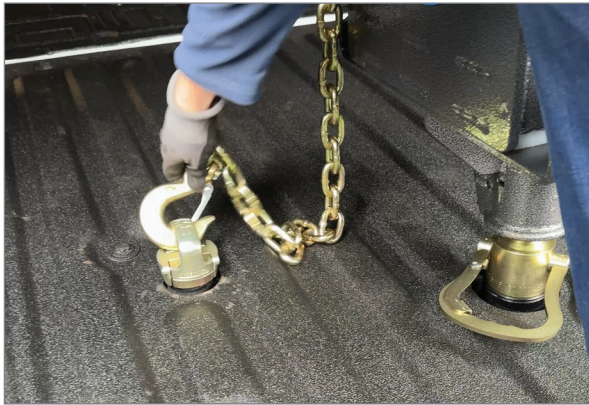


FIGURE D.



Above. Beyond. Always.

GOOSETECH

OWNER'S MANUAL & INSTALLATION INSTRUCTIONS

UNHOOK / DISCONNECT FROM TOW BALL

Once the trailer is in the desired position to be disconnected:

- a. Disconnect safety chains.
- b. Lower the tailgate of the tow vehicle (if applicable) and disconnect the truck-to-trailer electrical connection.
- c. Use the remote release hook to pull the GooseTech latch handle down into the open/unlocked position.
- d. Use trailer controls to lift the trailer/GooseTech off and clear of the tow ball.
- e. Once the trailer has been lifted clear of the ball, safety chains have been disconnected, latch handle is in the open/down position, tailgate is down and electrical connection between the truck and trailer is disconnected—pull the tow vehicle forward and clear of the GooseTech.
- f. Once the tow vehicle is clear of the Goosetech box, flip the latch handle up **into the closed position**, stow the electrical cord, stow the safety chain and stow the remote release hook.



FIGURE C.

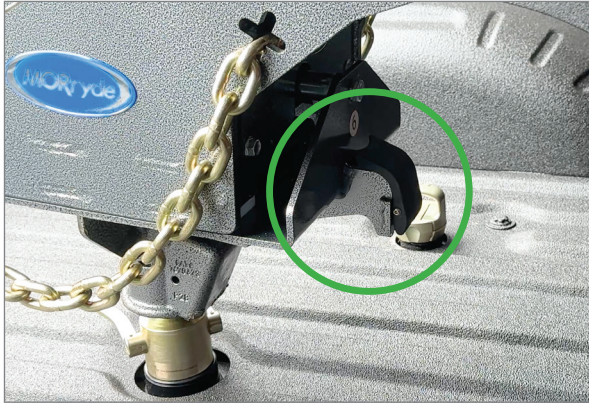


GOOSETECH

OWNER'S MANUAL & INSTALLATION INSTRUCTIONS

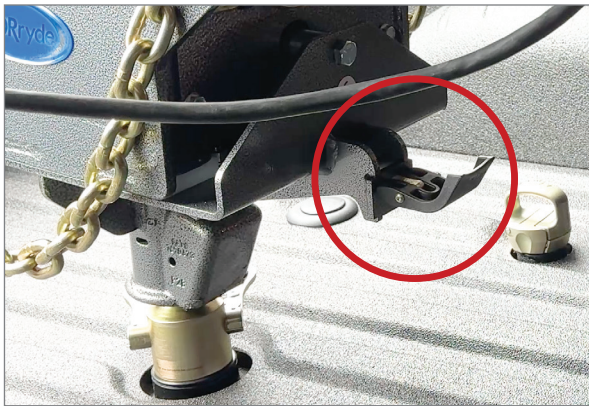
OPEN LATCH VS. CLOSED LATCH

IMPORTANT: Ensure the coupler is **fully attached** before travel.



FULLY LATCHED

Ensure the latch is fully closed.



UNLATCHED - EXAMPLE 1

Latch is open, unlocked, and fully extended.



UNLATCHED - EXAMPLE 2

Latch appears to be almost closed, but is **not** locked because the coupler is not completely seated on the tow ball.



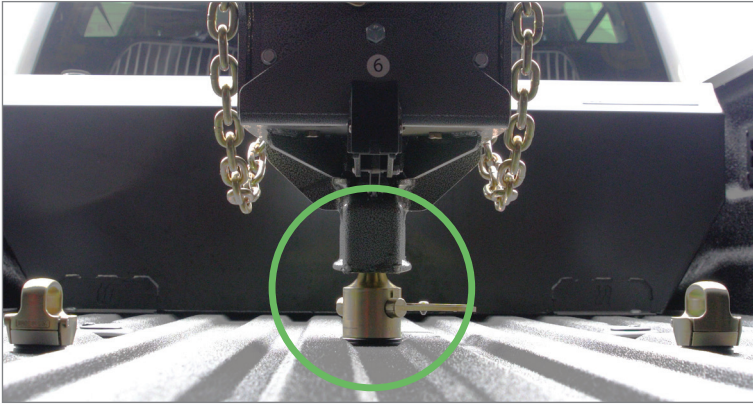
Above. Beyond. Always.

GOOSETECH

OWNER'S MANUAL & INSTALLATION INSTRUCTIONS

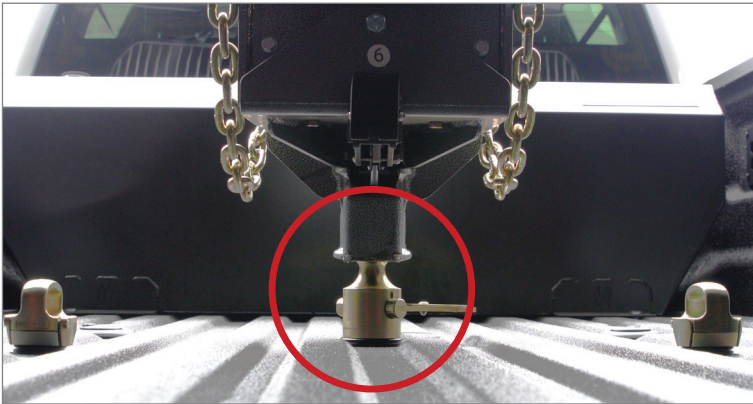
SECURED VS. UNSECURED COUPLER

IMPORTANT: Ensure the coupler is **fully attached** before travel.



FULLY SECURED/LATCHED

Ensure the ball is no longer visible.



NOT SECURED/LATCHED

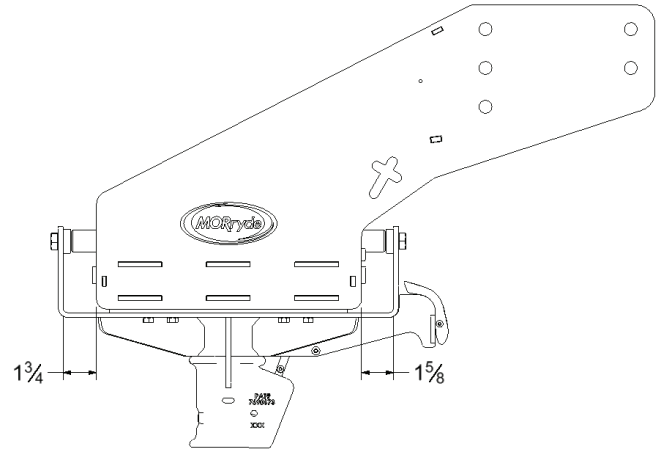
If the ball is still visible, it is **not** fully secure.

GOOSETECH

OWNER'S MANUAL & INSTALLATION INSTRUCTIONS

PREVENTATIVE MAINTENANCE

- Annually inspect the GooseTech coupler for excessive wear.
- Inspect the coupler assembly to ensure a neutral (centered) position. When the trailer is disconnected from the tow vehicle, a gap of approximately 1-5/8" to 1-3/4" should be observed between the lip of the coupler assembly and the side plate of the upper gooseneck mounting assembly.
- Inspect the retainment rod for excessive wear. The retainment rod may show surface scratch marks as an indication of occasional contact but the scratches, if present, should be minimal.
- Periodically check the torque values of all hardware. Torque specifications are listed below.



TORQUE SPECIFICATIONS

LOCATION	BOLT SIZE	(GR5)	(GR8)
Attaches upper mounting assembly to spring and spring to lower weldment	7/16-14		55 ft-lbs.
Retainment rod	9/16-12	90 ft-lbs.	
Attaches upper mounting assembly to trailer frame.	5/8-11	135 ft-lbs.	

Note: The 5/16-18 bolts that attach the glide blocks to the coupler assembly should be hand-tightened so that the end of the bolt is flush with the end of the locknut.



Above. Beyond. Always.

GOOSETECH

OWNER'S MANUAL & INSTALLATION INSTRUCTIONS

TROUBLESHOOTING

PROBLEM	REMEDY
Trailer not level.	Adjust GooseTech accordingly or install a different height ball.
Excessive bottoming of skid pad assembly. Jerky ride in tow vehicle.	Inspect to ensure that the rubber compression bumpers are in place. Check trailer brakes for proper operation. If above is satisfactory, it may be necessary to install a shear spring with a different spring rate. Contact MORryde's Parts Department for assistance; they will require your actual trailer weight to assist.
Coupler assembly does not return to neutral position when disconnected from tow vehicle.	Check for loose or torn rubber shear spring.
Excessive noise from GooseTech.	Verify that the GooseTech is securely attached to the 5th wheel. If the coupler is excessively worn, the coupler assembly will need to be replaced.

Still Experiencing Chucking Issues?

Please call our Parts Department at **574-293-1581** or email us at **Parts@morryde.com** for further assistance.

WARRANTY

Please visit **www.MORryde.com** for warranty information.



At MORryde, we have a passion for solving problems. Whether we're fabricating custom solutions, modifying a commercial chassis, or creating our innovative products, we answer to a wide range of markets and deliver on a variety of needs. At MORryde, it's simply about doing MORE for our customers, and it doesn't stop at the sale. We stand behind our products, believing in quality first, service always. No matter the issue, we'll be the first to respond and the last to be satisfied. In short, we build better — together.



Version 14



Above. Beyond. Always.

574.293.1581 • MORryde.com •    